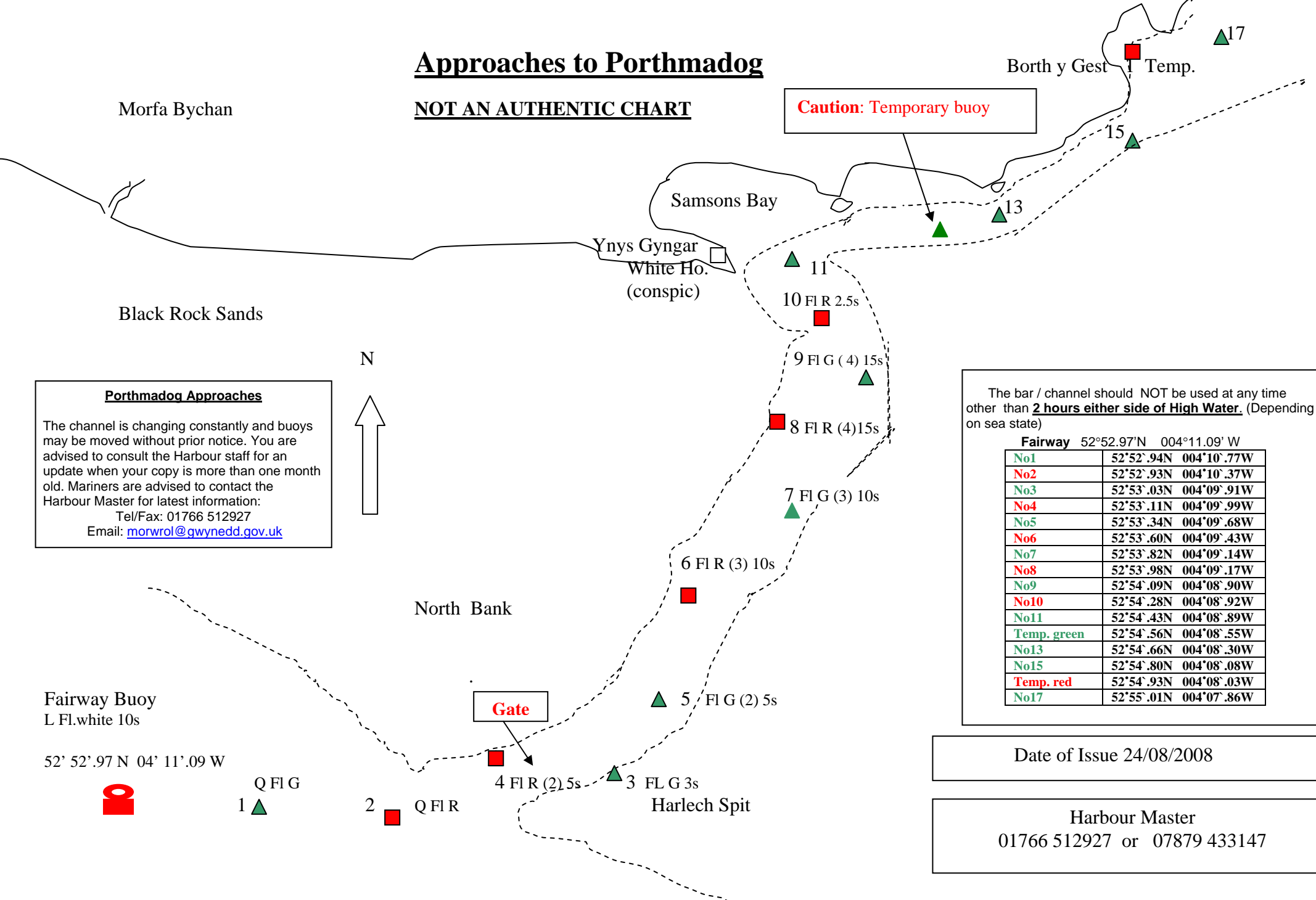


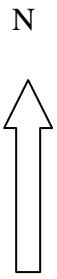
Approaches to Porthmadog

NOT AN AUTHENTIC CHART

Caution: Temporary buoy



Porthmadog Approaches
 The channel is changing constantly and buoys may be moved without prior notice. You are advised to consult the Harbour staff for an update when your copy is more than one month old. Mariners are advised to contact the Harbour Master for latest information:
 Tel/Fax: 01766 512927
 Email: morwrol@gwynedd.gov.uk



The bar / channel should NOT be used at any time other than **2 hours either side of High Water**. (Depending on sea state)

Fairway	52°52.97'N	004°11.09' W
No1	52°52'.94N	004°10'.77W
No2	52°52'.93N	004°10'.37W
No3	52°53'.03N	004°09'.91W
No4	52°53'.11N	004°09'.99W
No5	52°53'.34N	004°09'.68W
No6	52°53'.60N	004°09'.43W
No7	52°53'.82N	004°09'.14W
No8	52°53'.98N	004°09'.17W
No9	52°54'.09N	004°08'.90W
No10	52°54'.28N	004°08'.92W
No11	52°54'.43N	004°08'.89W
Temp. green	52°54'.56N	004°08'.55W
No13	52°54'.66N	004°08'.30W
No15	52°54'.80N	004°08'.08W
Temp. red	52°54'.93N	004°08'.03W
No17	52°55'.01N	004°07'.86W

Fairway Buoy
 L Fl.white 10s

52° 52'.97 N 04° 11'.09 W



Q Fl G
 1 ▲

2 ■ Q Fl R

Gate
 4 Fl R (2) 5s

3 Fl G 3s

5 Fl G (2) 5s

6 Fl R (3) 10s

7 Fl G (3) 10s

8 Fl R (4) 15s

9 Fl G (4) 15s

10 Fl R 2.5s

11 ▲

Date of Issue 24/08/2008

Harbour Master
 01766 512927 or 07879 433147